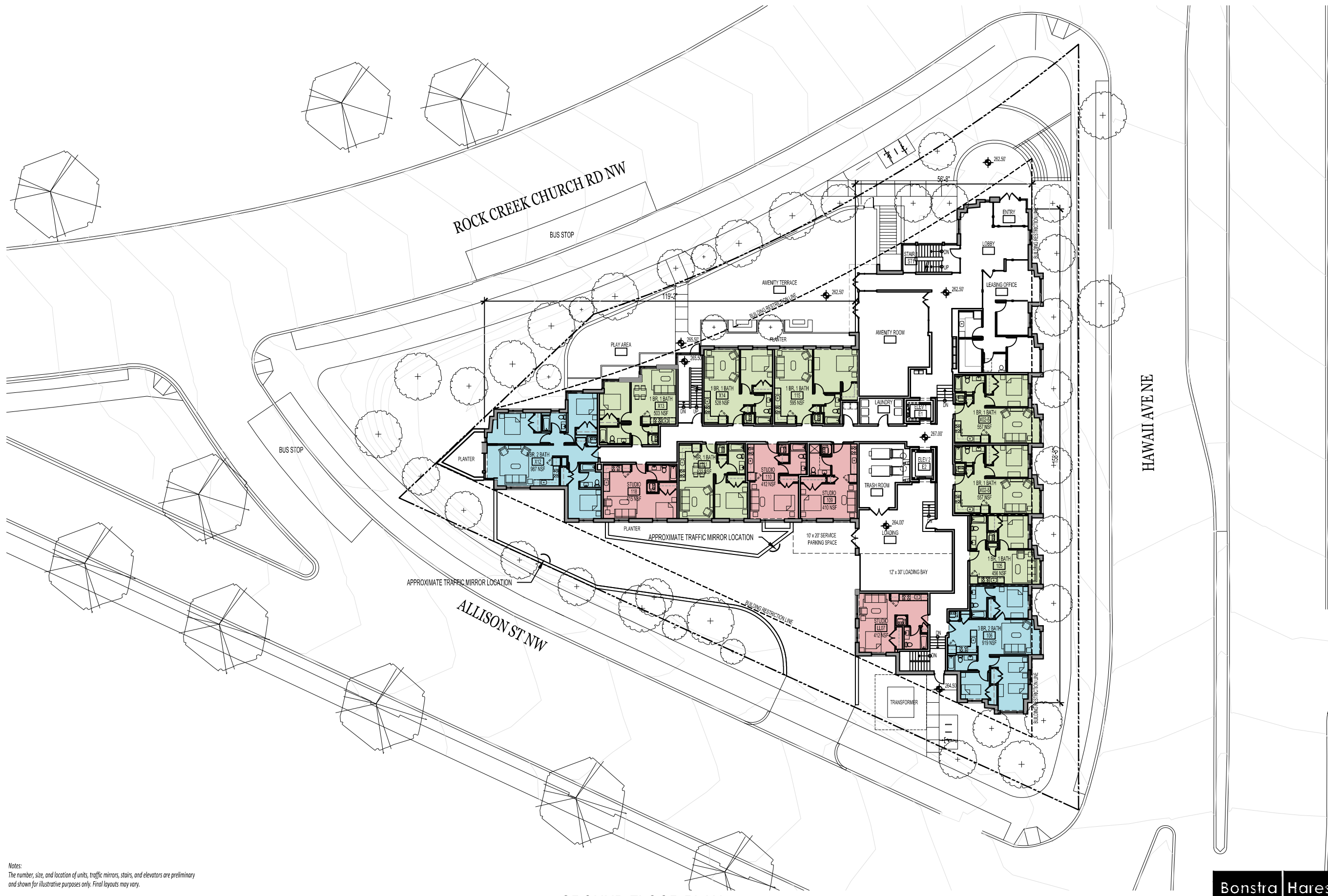


Tab B

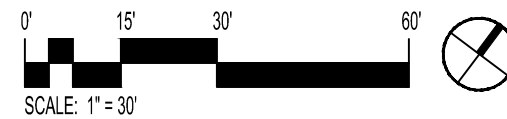


Notes:
The number, size, and location of units, traffic mirrors, stairs, and elevators are preliminary and shown for illustrative purposes only. Final layouts may vary.

WESLEY HOUSING DEVELOPMENT CORPORATION

GROUND FLOOR PLAN

© 2019 - Bonstra | Haresign ARCHITECTS



Bonstra | Haresign
ARCHITECTS

1728 Fourteenth Street, NW, Suite 300
Washington, DC 20009-4309

www.bonstra.com 202 588 9373 T

STRUCTURAL ENG. CLIENT
WESLEY HOUSING DEVELOPMENT CORPORATION
5515 CHEROKEE AVE #240
ALEXANDRIA, VA 22312

RATHGERBER/GOSS ASSOCIATES, P.C.
15871 CRABBS BRANCH WAY
ROCKVILLE, MD 20855
301-590-0073

MEP ENGINEER
CAPITOL ENGINEERING GROUP
1825 K STREET NW
SUITE 375
WASHINGTON, DC 20006
202-216-0039

1 HAWAII AVENUE
1 HAWAII AVENUE, NE
WASHINGTON, DC 20011

REVISIONS

1 PRE-HEARING SUBMISSION	8/27/19
--------------------------	---------

DATE: 9/23/19
PROJECT NO.: 2019-014
DRAWN BY: RM/JM/SS
CHECKED BY: DH/RM

GROUND FLOOR PLAN

A1.02